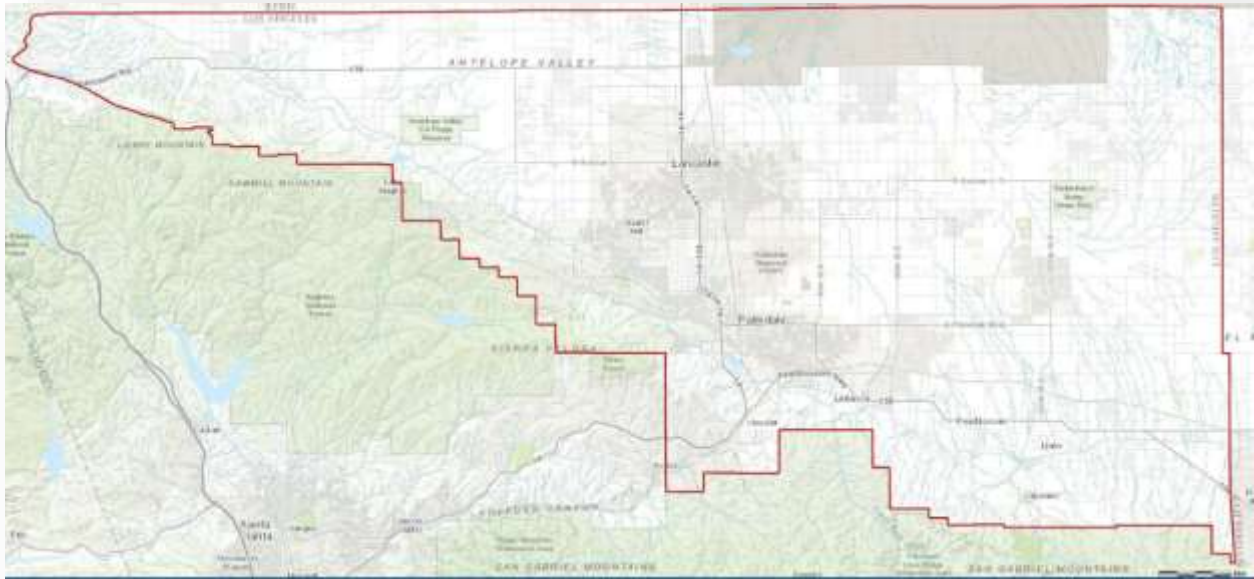


Antelope Valley Regional Conservation Investment Strategy (AV RCIS)

The AV RCIS is one of four pilot RCISs currently being developed in California. This study area includes all land within Los Angeles County that is in the DRECP boundary. The AV RCIS study area also includes the Peterson Ranch and Tejon Ranch areas, which are outside of the DRECP boundary.



Stakeholders for the AV RCIS:

- Association of Rural Town Councils
- Audubon
- BLM
- California Department of Fish and Wildlife
- California Energy Commission
- California State Parks
- Caltrans
- Center for Biological Diversity
- City of Lancaster (Invited as an observer)
- City of Palmdale (Invited as an observer)
- CNPS
- Cooper Ecological Monitoring, Inc.
- Defenders of Wildlife
- Desert & Mountains Conservation Authority
- DOD
- Edwards Air Force Base
- Endangered Habitats League
- Environmental Defense Fund
- High Desert Corridor
- High Speed Rail Authority
- Kern County (Invited as an observer)
- LA County
- LA County Farm Bureau
- LA County Parks
- LA Metro
- Land Veritas
- Large Scale Solar Association
- Mountains Recreation and Conservation Authority (MRCA)
- Natural Resources Defense Council (NRDC)
- Poppy Reserve/Mojave Desert Interpretive Association
- Regional Water Quality Control Board (Lahontan)
- San Bernardino County (Invited as an observer)
- San Gabriel Mts Forever
- Sierra Club
- Southern California Edison
- Strategic Growth Council
- Sun Power
- The Nature Conservancy (TNC)
- Transition Habitat Conservancy
- Trust for Public Land
- USDA
- USFWS
- 5th District Supervisor Antonovich
- 8 Minute Renewables, LLC

